



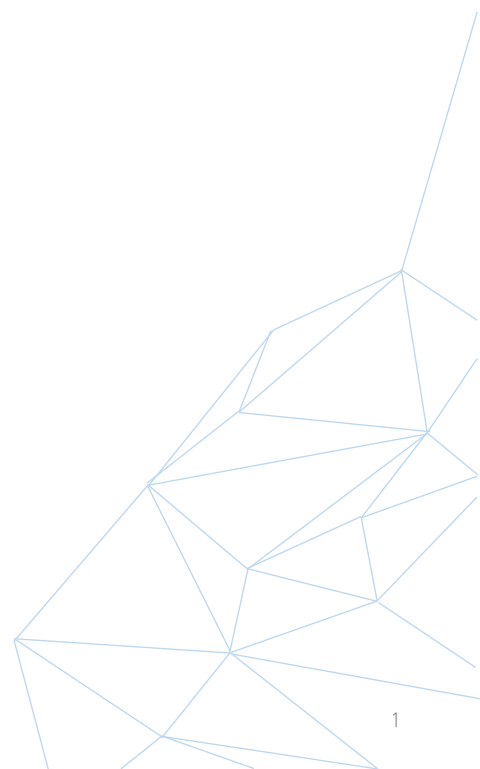
PIPE BENDING SYSTEMS GmbH & Co. KG

Hunold-Rump-Str. 76-80 · 57368 Lennestadt · Germany

Phone: +49.2725.9540-0 · Fax: +49.2725.9540-33

info@pipe-bending-systems.de

<http://pipe-bending-systems.com>



PIPE BENDING SYSTEMS GmbH & Co. KG (PBS)

- PBS has been a competent partner in pipe fabrication for more than five decades
- **PBS is an expert in customized piping and pipe pre-fabrication, particularly with regard to single parts and small series production**
- PBS develops and produces innovative, high-performance machine technology, precise measuring systems and intelligent software solutions
- PBS combines machinery, measuring technology and software to system solutions with high customer benefit
- PBS stands for simplicity and efficiency... simply smart.



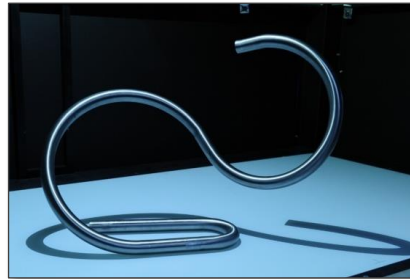
PIPE BENDING SYSTEMS | Our strategy

- Integration of machinery, measuring technology and software solutions in different combinations and levels of deployment to PIPE BENDING SYSTEMS



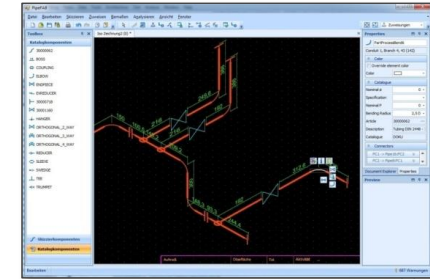
Innovative machinery

- Pipe bending machines
- Pipe end processing
- Connection technology



Precise measuring technology

- Optical measuring systems
- Coordinate measuring arms
- Pipe measuring software



Efficient software solutions

- Pipe bending software
- Workflow management software

PIPE BENDING SYSTEMS | Our products

Working center for hydraulic piping



TUBOMAT

Semi-automatic pipe bending machines



TUBOBEND

CNC pipe bending machines



TUBOTRON

All-electric CNC pipe bending machines



TUBOTRON VARIO

Pipe end processing & connection technology



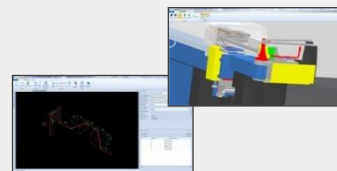
TUBOFORM / TUBOGRAT

Pipe measuring systems



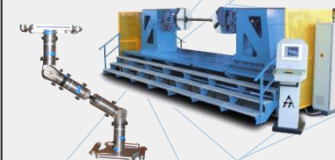
TUBOSCAN

Software solutions



PIPEFAB

Automated fabrication of template pipes



SCOPELINK / ROBOFIX

TUBOBEND | Semi-automatic pipe bending machines

Perfectly suited for manual pre-fabrication in small and medium sized batches



TUBOBEND 16



TUBOBEND 25



TUBOBEND 42



TUBOBEND 50 / 60



TUBOBEND 80

Bending direction either
right or left

TUBOBEND 42



Technical data

max. pipe diameter	42,0 mm
max. bending radius *	125 mm
Control	SIMATIC TP
bending speed	44 °/s
bending accuracy	± 0.1 °

* depends on pipe diameter

TUBOBEND 42

Basic equipment / features

- Compact and exposed bending head for maximum bending space
- Electronic control for bending axes with 7" Touch Panel, set point / actual value display, automatic sequencing of data records and storage capability for 100 bending programs
- Ergonomically optimized control panel
- Positioning device for pipe length and rotation, incl. 3-jaw chuck, stoppers and comfortable transversal adjustment
- Hydraulic pipe clamping with adjustable clamping pressure
- Hydraulic pressure die positioning
- Hydraulic mandrel retraction unit with comfortable transversal adjustment
- Maintenance-friendly housing concept with optimized accessibility
- Modern industrial design
- Machine mobile and flexible to use
- Optional right or left hand bending direction

Additional equipment / accessories

- Mechanical quick collet chuck or hydraulic collet chuck
- Adjustable bending speed
- Length and rotation measuring system with digital display
- Comfortable sequencing of data records for stopper adjustment
- Breaking system for length and rotation positioning of pipe
- Mandrel lubrication device
- Interface for data import from PIPEFAB pipe bending software



Application example: hydraulic pipe
carbon steel Ø 42,0 x 3,0 mm

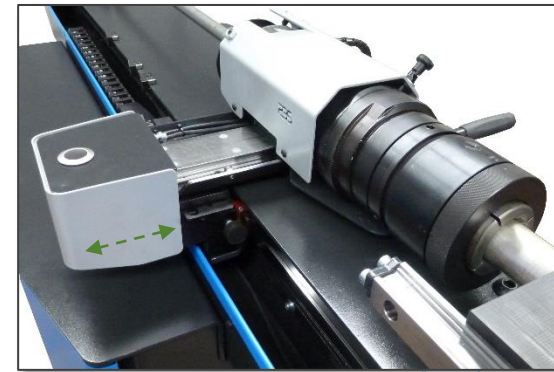
TUBOBEND 42



Ergonomically optimized control panel,
individually adjustable



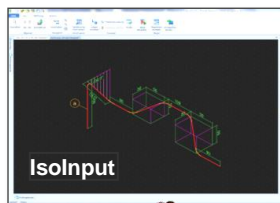
Clear arrangement of function keys



Mechanical quick collet chuck
(Option)

PIPEFAB 4.0 BE | Pipe Bending Software

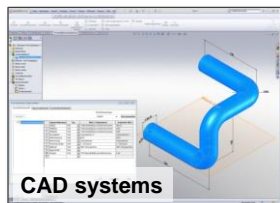
INPUT



IsolInput



Measuring systems



CAD systems

ISOMETRIC SKETCHING

MEASURING DATA

CAD DATA (STEP / IGES)

PIPEFAB 4.0 BE

Calculation



RESULTS

BENDING DATA

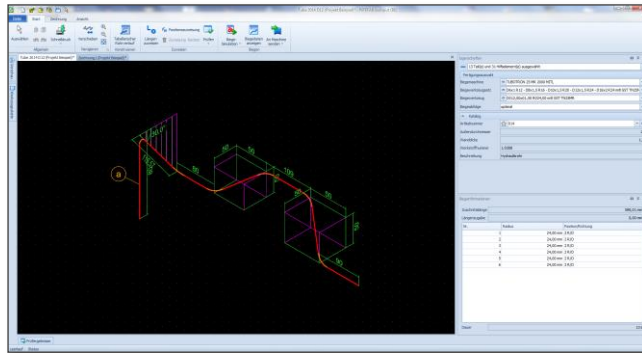


BENDING DATA CNC

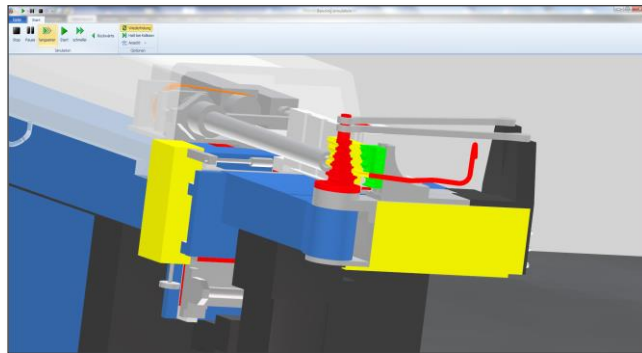


PIPEFAB 4.0 BE | Pipe Bending Software

Isometric sketching and dimensioning



Collision checking and bending simulation



PIPEFAB Bending data

Projekt: Projekt Beispiel
 Zeichnung: Tube 2014 D12
 Platz: Projekt Einzel: Tube 2014 D12

Maschine: TUBOTRON 25 MR 2000 MITL
 Diel R12 - DR11,5 R16 - D10x1,5 R20 -
 D12x1,5 R24 - D16x2 R24 mit GST

Werkzeug: TNS25MR
 Material: 1.0308 (12.00x1.50)
 Rohr: D14 (Hydraulische)

Säglinge: 590,01 mm
 Endlänge: 77,18 mm

Diagonale: 362,62 mm
 Gewicht: 2,491 kg

	Transport	Rotation	Biegung	Radius	Rückung	Flanken	Bogen	Stück	Sub	Grunde	Mult	Verz
								länge	modell	Länge	stern	Rückung
1	502,43	0,00	121,80	24,00	2 R10	40,79	1,22	120,00		37,58	(0,00)	0,00
2	454,08	90,00	91,60	24,00	2 R10	37,30	0,98	90,00		48,57	(0,00)	0,00
3	374,07	90,00	91,60	24,00	2 R10	22,89	0,57	54,74		42,91	(0,00)	0,00
4	200,20	15,00	96,00	24,00	2 R10	22,89	0,57	54,74		62,98	(0,00)	0,00
5	183,94	15,00	96,00	24,00	2 R10	22,89	0,57	54,74		83,37	(0,00)	0,00
6	100,08	195,00	96,00	24,00	2 R10	22,89	0,57	54,74		60,98	(0,00)	0,00

Meldungen
 * Rohrverlauf dieses Rohrsegment ist außerhalb der Biegemaschine.

03.04.2014 PIPEFAB Version 4.0.17.357 (Dev/Free) Seite 1 von 1